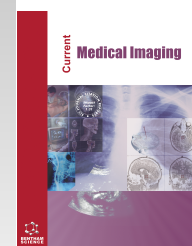




Current Medical Imaging

Content list available at: <https://benthamscience.com/journals/cmimr>



RESEARCH ARTICLE

Quantitatively Measured Infrapatellar Fat Pad Signal Intensity Alteration is Associated with Joint Effusion-synovitis in Knee Osteoarthritis

Guangfeng Ruan^{1,2,3,#}, Shilong Lu^{4,#}, Yan Zhang¹, Zhaohua Zhu¹, Peihua Cao¹, Xiaoshuai Wang¹, Jia Li¹, Su'an Tang¹, Tianyu Chen¹, Weiyu Han¹, Jianwei Zhu⁵, Di Chen⁶, Benny Antony³, Tania Winzenberg³, Anita E. Wluka⁷, Flavia Cicuttini⁷ and Changhai Ding^{1,2,3,*}

¹Clinical Research Centre, Zhujiang Hospital, Southern Medical University, Guangzhou, China

²Clinical Research Centre, Guangzhou First People's Hospital, School of Medicine, South China University of Technology, Guangzhou, China

³Menzies Institute for Medical Research, University of Tasmania, Hobart, Australia

⁴Imaging Diagnosis Department, Zhujiang Hospital, Southern Medical University, Guangzhou, China

⁵Department of orthopedics, Guangzhou First People's Hospital, School of Medicine, South China University of Technology, Guangzhou, China

⁶Faculty of Pharmaceutical Sciences, Shenzhen Institute of Advanced Technology, Chinese Academy of Sciences, Shenzhen, China

⁷School of Public Health and Preventive Medicine, Monash University, Melbourne, Australia

Abstract:

Objective:

The objective of this study is to investigate whether quantitatively measured infrapatellar fat pad (IPFP) signal intensity alteration is associated with joint effusion-synovitis in people with knee osteoarthritis (OA) over two years.

Methods:

Among 255 knee OA patients, IPFP signal intensity alteration represented by four measurement parameters [standard deviation of IPFP signal intensity (IPFP sDev), upper quartile value of IPFP high signal intensity region (IPFP UQ (H)), ratio of IPFP high signal intensity region volume to whole IPFP volume (IPFP percentage (H)), and clustering factor of IPFP high signal intensity (IPFP clustering factor (H))] was measured quantitatively at baseline and two-year follow-up using magnetic resonance imaging (MRI). Effusion-synovitis of the suprapatellar pouch and other cavities were measured both quantitatively and semi-quantitatively as effusion-synovitis volume and effusion-synovitis score at baseline and two-year follow-up using MRI. Mixed effects models assessed the associations between IPFP signal intensity alteration and effusion-synovitis over two years.

Results:

In multivariable analyses, all four parameters of IPFP signal intensity alteration were positively associated with total effusion-synovitis volume and effusion-synovitis volumes of the suprapatellar pouch and of other cavities over two years (all $P < 0.05$). They were also associated with the semi-quantitative measure of effusion-synovitis except for IPFP percentage (H) with effusion-synovitis in other cavities.

Conclusion:

Quantitatively measured IPFP signal intensity alteration is positively associated with joint effusion-synovitis in people with knee OA, suggesting that IPFP signal intensity alteration may contribute to effusion-synovitis and a coexistent pattern of these two imaging biomarkers could exist in knee OA patients.

Keywords: Osteoarthritis, Infrapatellar fat pad, Effusion-synovitis, MRI, Cartilage, Osteophyte.

Article History

Received: July 14, 2022

Revised: January 24, 2023

Accepted: January 31, 2023

1. INTRODUCTION

Osteoarthritis (OA) is the most common form of joint disease and is most frequently seen in the knee [1]. Knee OA is

characterized by articular cartilage loss and osteophyte formation as well as other joint structure abnormal changes, such as synovitis, menisci injury, ligament tears, and

infrapatellar fat pad (IPFP) alteration [2]. It is the leading cause of joint pain and physical disability, which causes a large socioeconomic burden [1]. Older age, female gender, high body mass index (BMI) are the most common risk factors for knee OA [1]. Although the pathogenesis of OA is unclear, low grade chronic inflammation is thought to play a central role in OA [1].

Synovial inflammation is common in all stages of OA, and its influence on articular cartilage is thought to play an important role in the pathophysiology of OA [3, 4]. Joint effusion volume has been shown to correlate with synovial inflammation [5]. A combined assessment of synovial effusion and synovitis by using non-contrast-enhanced magnetic resonance imaging (MRI) has been proposed, termed as “effusion-synovitis” [6]. Effusion-synovitis can predict the incidence and progression of knee OA [3, 7 - 9], suggesting that this could be a risk factor and a prognostic biomarker of knee OA.

The IPFP is a local fat pad situated inferior to the patella and filling the anterior knee compartment intra-articularly and extra-synovial [2, 10]. Despite a buffering and lubricating function in the knee joint, abnormal IPFP appears to play a detrimental role in the initiation and progression of knee OA [2, 11]. It is believed that abnormal IPFP produces various pro-inflammatory cytokines and thus promotes the pathological process of knee OA [10, 12]. Inflammation within the IPFP can be assessed using non-contrast-enhanced MRI [11] and is an imaging biomarker that can predict knee OA progression [13, 14].

As an extra-synovial tissue, the IPFP does not directly interact with the articular cartilage but closely contacts with the synovial membrane [15]. Therefore, abnormal IPFP may play roles in knee OA by affecting the synovial membrane. However, currently, no study has explored the interaction between IPFP and synovium, and whether abnormal IPFP assessed by MRI has an influence on synovitis in knee OA remains to be determined.

Recently, we developed a semi-automatic, quantitative method to measure IPFP high signal intensity alteration on MRI images [14]. This method is reproducible and has predictive validity in knee OA [2, 11, 13, 14]. This study aims to investigate whether quantitatively assessed IPFP signal intensity alteration was associated with effusion-synovitis in patients with knee OA to provide knowledge about this using a novel method.

2. METHODS

2.1. Study Design and Participants

The data of this study was from Vitamin D Effect on Osteoarthritis (VIDEO) study, a multicenter, randomized, double-blind and placebo-controlled clinical trial for evaluating the effects of vitamin D supplementation on knee pain and

structural changes in knee OA patients with vitamin D deficiency [16]. In this study, treatment group (129) and placebo group (126) were combined and set as a cohort for analyses. The inclusion and exclusion criteria were the same as the VIDEO study [16]. Briefly, participants were aged between 50 and 79 years, met the American College of Rheumatology (ACR) criteria for clinical knee OA [17], and had a pain score of more than 20 mm on a 100 mm visual analog scale (VAS). They also had an ACR function class rating of I, II and III [18], and relatively good health, with a score of 0-2 on a 5 point Likert scale (from 0 indicating very good health to 4 indicating very poor health). Participants were excluded if they had grade 3 knee radiographic OA (ROA) according to the Osteoarthritis Research Society International (OARSI) atlas [19], contraindication to MRI, rheumatic diseases, and other severe diseases. The VIDEO study was approved by the Tasmania Health and Human Medical Research Ethics Committee (reference number H1040). Written informed consent was obtained from all participants. Our current study consisted of 255 participants of the VIDEO study in Tasmania who had received sagittal T2-weighted MRI scans.

2.2. Knee MRI Protocol

MRI of the study knees was obtained at baseline and 24-month follow-up on a non-contrast 1.5-Tesla whole-body MRI unit (Picker, Cleveland, OH, USA) using a commercial transmit-receive extremity coil. Fat-suppressed T2-weighted fast spin-echo sequences were used as follows: sagittal T2-weighted fat-saturated fast spin-echo with flip angle 90°, repetition time 3060 ms, echo time 94 ms, FOV 160 mm, 46 slices, 256×224-pixel matrix slice thickness of 2 mm with no gap.

2.3. IPFP Signal Intensity Measurement

High signal intensity in IPFP was assessed on T2-weighted MRI, using MATLAB software (MATLAB 8.4, The MathWorks Inc) based on our newly developed program [14]. The segmentation of IPFP was performed at 10 intermediate slices in the whole IPFP to avoid interference from other tissues (*i.e.*, synovium, ligaments, and subcutaneous fat) and effusion, which were hard to distinguish in the beginning and ending slices. This measurement is a semi-automated procedure. The reader manually chose a set of points in sequence near the outer contour of IPFP and created an initial lasso around IPFP, then the initial lasso contracted inward and approximated to the boundary of IPFP automatically until the actual edge was approached (Fig. 1A). High signal-intensity alterations of IPFP (Fig. 1B) were calculated based on the algorithm of the newly developed program and the data were output automatically.

The measurement parameters of IPFP signal intensity can be classified into four categories: the signal intensity of IPFP, the high signal intensity of IPFP, the volume of high signal intensity, and clustering effect of high signal intensity. We selected one measurement parameter to represent each of these four categories based on the concurrent validity and the clinical construct validity, which have been validated by describing associations of IPFP measurements with knee structural abnormalities and a semi-quantitative scoring method,

* Address correspondence to this author at the Department of Clinical Research Centre, Zhujiang Hospital, Middle Gongye Avenue, Guangzhou, Guangdong Province, China; Tel: +61-2-62267730; E-mail: Changhai.Ding@utas.edu.au

[†]These authors equally contributed

respectively as we previously reported [14]. The measurement parameters were the standard deviation of IPFP signal intensity (IPFP sDev), upper quartile value of IPFP high signal intensity region (IPFP UQ (H)), ratio of IPFP high signal intensity region volume to whole IPFP volume (IPFP percentage (H)), and clustering factor of IPFP high signal intensity (IPFP clustering factor (H)) to represent the four categories, respectively. Intraobserver and interobserver reliabilities for these quantitative measurements were high (all intraclass correlation coefficients and interclass correlation coefficients >0.90).

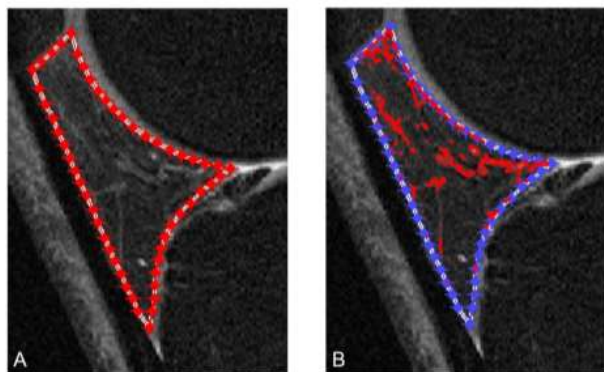


Fig. (1). Segmentation and high signal-intensity calculation of IPFP using MATLAB.

(A) The IPFP was segmented semi-automatically first. An initial lasso is created by a set of points near the outer contour of IPFP and then contracts inward to approximate the real boundary of IPFP automatically. (B) The high signal intensity regions (red areas) were obtained automatically after outlining the boundary of IPFP.

2.4. Effusion-synovitis Measurement

Effusion-synovitis was assessed both quantitatively and semi-quantitatively on T2-weighted MRI. Effusion-synovitis was distinguished in the following subregions according to the anatomy of the knee joint synovial cavity: (1) suprapatellar pouch and (2) other cavities which include central portion, posterior femoral recess and sub popliteal recess.

Quantitative measurement of effusion-synovitis was by effusion-synovitis volume. The effusion synovitis volume was isolated by selecting a region of interest with an intra-articular fluid-equivalent signal on a section-by-section basis. The final three-dimensional volume rendering was generated using commercial in-house OsiriX Lite imaging software (32-bit version 5.9, Pixmeo SARL). Intraobserver and interobserver reliabilities for effusion-synovitis in both subregions were high (all intraclass correlation coefficients and interclass correlation coefficients >0.90). Total effusion-synovitis volume of the whole joint was obtained by summing effusion-synovitis volume of the suprapatellar pouch and other cavities.

Semi-quantitative measurement of effusion-synovitis was by effusion-synovitis score. The effusion-synovitis score was evaluated based on a modified Whole Organ Magnetic Resonance Imaging Score (WORMS) method. This method was scored from 0 to 3 in terms of the estimated maximal distention of the synovial cavity: 0, normal; 1, no more than 33% of maximum potential distention; 2, 33-66% of maximum

potential distention; 3, more than 66% of maximum potential distention. The interrater reliabilities and intrareader reliabilities of effusion-synovitis score in different subregions were 0.63 - 0.75 and 0.60 - 0.75 (weighted κ), respectively. Total effusion-synovitis score of the whole joint was obtained by summing effusion-synovitis score of the suprapatellar pouch and other cavities.

2.5. Anthropometrics

Height and weight were measured at baseline by using stadiometer (Invicta Plastics Ltd) and electronic scales (Heine S-7307), respectively. BMI was calculated as weight (kg) divided by square height (m^2).

2.6. Serum Vitamin D Measurement

Serum 25-hydroxyvitamin D was measured at baseline using direct competitive chemiluminescent immunoassays (DiaSorin Inc).

2.7. Statistical Analysis

Baseline characteristics were summarized using descriptive statistics. Associations between IPFP signal intensity and effusion-synovitis over 24 months were estimated using a mixed-effects model (multilevel mixed-effects linear regression model or multilevel mixed-effects ordered logistic regression model), which allows for more appropriate adjustments for repeated measures and protection against bias for missing data [20]. In these models, IPFP signal intensity parameters, age, sex, BMI, intervention (vitamin D supplementation), and baseline serum vitamin D level were used as fixed effects, and individual participant identification was used as random intercepts (IPFP signal intensity parameters were the independent variables; quantitatively and semi-quantitatively assessed effusion-synovitis were the dependent variables; age, sex, BMI, intervention, and baseline serum vitamin D level were the confounding variables). The normality of model residuals was routinely checked.

All statistical analyses were performed on Stata (version 15.0, StataCorp). A *P* value less than 0.05 (two tailed) was regarded as statistically significant.

3. RESULTS

A total of 255 participants (49.41% females) with a mean age of 63.0 years were included in this study. Participants' baseline median level of total effusion-synovitis volume was 6.74 ml, and the median volume of effusion-synovitis in suprapatellar pouch and other cavities was 4.23 ml and 2.45 ml, respectively (Table 1). Other baseline characteristics, including anthropometrics and IPFP signal intensity parameters, are also shown in Table 1.

All the IPFP signal intensity parameters, including IPFP sDev, IPFP percentage (H), IPFP UQ (H), and IPFP clustering factor (H), were positively and significantly associated with total effusion-synovitis volume and effusion-synovitis volumes of suprapatellar pouch and other cavities over two years after adjustment for age, sex, BMI, intervention, and baseline serum vitamin D level (Table 2).

Table 1. Baseline characteristics of participants (N = 255).

Characteristic	Value
Age (years) ^a	63.00 (7.27)
Female, N (%)	126 (49.41)
Height (cm) ^a	168.85 (9.78)
Weight (kg) ^a	84.62 (15.23)
BMI (kg/m ²) ^a	29.69 (4.94)
Total effusion-synovitis volume (ml) ^b	6.74 (3.15, 14.23)
Suprapatellar pouch effusion-synovitis volume (ml) ^b	4.23 (1.65, 10.43)
Other cavity effusion-synovitis volume (ml) ^b	2.45 (1.42, 4.02)
IPFP sDev ^a	8.41 (2.95)
IPFP percentage (H) ^a	6.90 (1.33)
IPFP UQ (H) ^a	4.17 (1.42)
IPFP clustering factor (H) ^a	6.34 (0.90)

Note:^aMeans (standard deviation); ^bMedians (interquartile range).

IPFP sDev: standard deviation of IPFP signal intensity; IPFP UQ (H): upper quartile value of IPFP high signal intensity region; IPFP percentage (H): ratio of IPFP high signal intensity region volume to whole IPFP volume; IPFP clustering factor (H): clustering factor of IPFP high signal intensity.

Table 2. Mixed-effects model for associations between IPFP signal intensity parameters and joint effusion synovitis volume over 2 years.

-	IPFP sDev*		IPFP percentage (H)*		IPFP UQ (H)*		IPFP clustering factor (H)*	
-	β (95% CI)	P Value	β (95% CI)	P Value	β (95% CI)	P Value	β (95% CI)	P Value
Effusion synovitis volume (total)	0.66 (0.36, 0.96)	<0.001	1.56 (0.88, 2.23)	<0.001	0.91 (0.31, 1.50)	0.003	2.57 (1.64, 3.49)	<0.001
Effusion synovitis volume (SP)	0.51 (0.24, 0.78)	<0.001	1.39 (0.78, 1.99)	<0.001	0.66 (0.13, 1.20)	0.016	2.10 (1.26, 2.94)	<0.001
Effusion synovitis volume (OC)	0.15 (0.10, 0.19)	<0.001	0.17 (0.06, 0.28)	0.002	0.24 (0.15, 0.33)	<0.001	0.46 (0.32, 0.61)	<0.001

Note: Dependent variable: effusion synovitis volume (ml).

Multilevel mixed-effects linear regression was used, results were expressed as coefficients (β).

IPFP sDev: standard deviation of IPFP signal intensity; IPFP UQ (H): upper quartile value of IPFP high signal intensity region; IPFP percentage (H): ratio of IPFP high signal intensity region volume to whole IPFP volume; IPFP clustering factor (H): clustering factor of IPFP high signal intensity; SP: suprapatellar pouch; OC: other cavities.

* Adjusted for age, sex, BMI, intervention, and baseline serum vitamin D level.

Similarly, all these four IPFP signal intensity parameters had positively significant associations with total effusion-synovitis score and effusion-synovitis scores of suprapatellar pouch and other cavities over two years after adjustment for potential confounders, except for the association of IPFP percentage (H) with other cavities effusion-synovitis score which did not reach statistical significance (Table 3).

Table 3. Mixed-effects model for associations between IPFP high signal intensity parameters and joint effusion synovitis score over 2 years.

-	IPFP sDev*		IPFP percentage (H)*		IPFP UQ (H)*		IPFP clustering factor (H)*	
-	OR (95% CI)	P Value	OR (95% CI)	P Value	OR (95% CI)	P Value	OR (95% CI)	P Value
Effusion synovitis score (total)	1.44 (1.27, 1.62)	<0.001	1.44 (1.09, 1.89)	0.010	1.73 (1.37, 2.17)	<0.001	2.77 (1.90, 4.05)	<0.001
Effusion synovitis score (SP)	1.33 (1.18, 1.50)	<0.001	1.71 (1.28, 2.27)	<0.001	1.50 (1.18, 1.89)	0.001	2.86 (1.93, 4.24)	<0.001
Effusion synovitis score (OC)	1.39 (1.23, 1.56)	<0.001	1.23 (0.94, 1.60)	0.124	1.67 (1.33, 2.10)	<0.001	2.33 (1.62, 3.34)	<0.001

Note: Dependent variable: effusion synovitis score.

Multilevel mixed-effects ordered logistic regression was used, results were expressed as odds ratio (OR).

IPFP sDev: standard deviation of IPFP signal intensity; IPFP UQ (H): upper quartile value of IPFP high signal intensity region; IPFP percentage (H): ratio of IPFP high signal intensity region volume to whole IPFP volume; IPFP clustering factor (H): clustering factor of IPFP high signal intensity; SP: suprapatellar pouch; OC: other cavities.

* Adjusted for age, sex, BMI, intervention, and baseline serum vitamin D level.

4. DISCUSSION

To the best of our knowledge, this is the first study to investigate the associations between MRI assessed IPFP signal intensity alteration and effusion-synovitis in knee OA patients. We found that quantitative measurements of IPFP signal intensity alteration were positively associated with effusion-synovitis measured both quantitatively and semi-quantitatively, suggesting that a coexistent pattern of IPFP signal intensity alteration and effusion-synovitis may appear in knee OA patients and a combination of these two imaging biomarkers could be considered in future knee OA research.

IPFP is the biggest adipose tissue structure within the knee, with an abundance of adipocytes, immune cells, vessels, and nerve fibers [11]. It is a potential source of pro-inflammatory cytokines [12]. Abnormal IPFP could produce various cytokines such as IL-1 β , TNF- α , IL-6, IL-8, leptin and resistin, and thus might play a detrimental role in knee OA through stimulating the inflammatory process [2, 12]. In epidemiological studies, IPFP signal intensity alteration is associated with knee structural abnormalities and knee symptoms and can predict the deterioration of knee structure and symptoms, as well as the occurrence of radiographic OA and knee replacement [2, 9, 13, 21 - 24]. However, as IPFP and articular cartilage are separated by synovium, so much so that the pro-inflammatory factors secreted by IPFP may not act directly on cartilage; therefore, how abnormal IPFP plays a damaging role in OA remains unclear.

Owing to having adjacent anatomical positions, IPFP and the synovium may affect each other mutually by the pro-inflammatory factors they secrete. Previous studies have

indicated that abnormal IPFP may be related to synovitis [25 - 27]. One study showed that IPFP opacity grading based on lateral knee radiography was well correlated with synovitis grades observed at contrast-enhanced MRI [25]. In another study in young adults following anterior cruciate ligament tear, IPFP hyperintense signal alteration was associated with higher inflammatory cytokine levels in synovia [26]. An in vitro study has proved that the conditioned medium of IPFP from end-stage knee OA patients can induce an inflammatory and pro-degradative phenotype in autologous fibroblast-like synoviocytes [27]. In our current study, IPFP signal intensity alteration was positively associated with effusion-synovitis, suggesting that abnormal IPFP reflected by signal intensity alteration could accelerate effusion-synovitis. As effusion-synovitis plays a detrimental role in OA, the damaging effect of abnormal IPFP in OA could be mediated by effusion-synovitis. Moreover, this study suggested a coexistent pattern of IPFP signal intensity alteration and effusion-synovitis in knee OA patients. Considering both two imaging biomarkers are surrogates of the local inflammation, studying the two biomarkers simultaneously could be suggested in future knee OA research.

There are some strengths of this study. First, our semi-automatic quantitative method for IPFP signal intensity alteration measurement has certain advantages. Before we developed this novel method, almost all studies determined IPFP signal intensity alteration by manual semi-quantitative methods. The reproducibility of the manual semi-quantitative method is not high as it depends on a subjective evaluation. It may be less sensitive than quantitative measurements for changes over time and the cost of the manual assessment can be high due to the expense of radiology expertise [14]. Second, the feature of IPFP signal intensity alteration was comprehensively displayed as four parameters were selected to represent the different aspects of IPFP signal intensity alteration. Last, effusion-synovitis was measured both qualitatively and semi-quantitatively; therefore, measurement reliability of the outcome was relatively high.

There are some potential limitations of this study. First, it was a post hoc analysis using data from the randomized controlled trial; therefore, results could be affected by the intervention (vitamin D supplementation). However, adjustment for the intervention was performed in all analyses. Second, the inclusion and exclusion criteria were designed for the original randomized controlled trial; therefore, generalizability to the general knee OA population needs to be further confirmed. Last, our newly developed method mainly focuses on hyperintense signal alteration in IPFP. Hypointense signal alteration may represent different pathological changes of IPFP and also could be associated with effusion-synovitis. Further studies focusing on the hypointense signal alteration of IPFP are needed.

CONCLUSION

In conclusion, quantitatively measured IPFP signal intensity alteration is positively associated with joint effusion-synovitis in patients with knee OA, suggesting that IPFP signal intensity alteration may contribute to effusion-synovitis and a

coexistent pattern of these two imaging biomarkers could exist in knee OA patients.

LIST OF ABBREVIATIONS

ACR	= American College of Rheumatology
IPFP clustering factor (H)	= Clustering factor of IPFP high signal intensity
IPFP percentage (H)	= Ratio of IPFP high signal intensity region volume to whole IPFP volume
IPFP sDev	= Standard deviation of IPFP signal intensity
IPFP UQ (H)	= Upper quartile value of IPFP high signal intensity region
MRI	= Magnetic resonance imaging
OA	= Osteoarthritis
OARSI	= Osteoarthritis Research Society International
ROA	= Radiographic OA.
VAS	= Visual analog scale
VIDEO	= Vitamin D Effect on Osteoarthritis

AUTHOR CONTRIBUTIONS

Acquisition of data: XW, JL, ST, and TC. Analysis and interpretation of data: all authors. Drafting of the article: GR, SL and CD. Revising and final approval of the article: All authors.

ETHICS APPROVAL AND CONSENT TO PARTICIPATE

The VIDEO study was approved by the Tasmania Health and Human Medical Research Ethics Committee (reference number H1040).

HUMAN AND ANIMAL RIGHTS

No animals were used in this research. All procedures performed in studies involving human participants were in accordance with the ethical standards of institutional and/or research committee and with the 1975 Declaration of Helsinki, as revised in 2013.

CONSENT FOR PUBLICATION

Written informed consent was obtained from all participants.

STANDARDS OF REPORTING

STROBE guidelines were followed.

AVAILABILITY OF DATA AND MATERIALS

The data and supportive information are available within the article.

FUNDING

This work has been fully supported by the National Natural Science Foundation of China (82003542 & 82002331), the Natural Science Foundation of Guangdong Province (2021A1515010005), and the Special Program of Chinese

Postdoctoral Science Foundation (2022T150301).

CONFLICT OF INTEREST

The authors declare that there is no conflict of interest regarding the publication of this study.

ACKNOWLEDGEMENTS

We would like to thank the participants who made this study possible, and thank the staff and volunteers who collected the data.

REFERENCES

- [1] Ruan G, Xu J, Wang K, *et al.* Associations between serum S100A8/S100A9 and knee symptoms, joint structures and cartilage enzymes in patients with knee osteoarthritis. *Osteoarthritis Cartilage* 2019; 27(1): 99-105. [http://dx.doi.org/10.1016/j.joca.2018.08.020] [PMID: 30240939]
- [2] Wang K, Ding C, Hannon MJ, Chen Z, Kwok CK, Hunter DJ. Quantitative signal intensity alteration in infrapatellar fat pad predicts incident radiographic osteoarthritis: The osteoarthritis initiative. *Arthritis Care Res* 2019; 71(1): 30-8. [http://dx.doi.org/10.1002/acr.23577] [PMID: 29648688]
- [3] Mathiessen A, Conaghan PG. Synovitis in osteoarthritis: Current understanding with therapeutic implications. *Arthritis Res Ther* 2017; 19(1): 18. [http://dx.doi.org/10.1186/s13075-017-1229-9] [PMID: 28148295]
- [4] Hügler T, Geurts J. What drives osteoarthritis?—synovial *versus* subchondral bone pathology. *Rheumatology* 2017; 56(9): 1461-71. [PMID: 28003493]
- [5] Burke CJ, Alizai H, Beltran LS, Regatte RR. MRI of synovitis and joint fluid. *J Magn Reson Imaging* 2019; 49(6): 1512-27. [http://dx.doi.org/10.1002/jmri.26618] [PMID: 30618151]
- [6] Wang X, Jin X, Blizzard L, *et al.* Associations between knee effusion-synovitis and joint structural changes in patients with knee osteoarthritis. *J Rheumatol* 2017; 44(11): 1644-51. [http://dx.doi.org/10.3899/jrheum.161596] [PMID: 28864651]
- [7] MacFarlane LA, Yang H, Collins JE, *et al.* Association of changes in effusion-synovitis with progression of cartilage damage over eighteen months in patients with osteoarthritis and meniscal tear. *Arthritis Rheumatol* 2019; 71(1): 73-81. [http://dx.doi.org/10.1002/art.40660] [PMID: 30133187]
- [8] Harkey MS, Davis JE, Lu B, *et al.* Early pre-radiographic structural pathology precedes the onset of accelerated knee osteoarthritis. *BMC Musculoskelet Disord* 2019; 20(1): 241. [http://dx.doi.org/10.1186/s12891-019-2624-y] [PMID: 31113401]
- [9] Davis JE, Ward RJ, MacKay JW, *et al.* Effusion-synovitis and infrapatellar fat pad signal intensity alteration differentiate accelerated knee osteoarthritis. *Rheumatology* 2019; 58(3): 418-26. [http://dx.doi.org/10.1093/rheumatology/key305] [PMID: 30346594]
- [10] Jiang LF, Fang JH, Wu LD. Role of infrapatellar fat pad in pathological process of knee osteoarthritis: Future applications in treatment. *World J Clin Cases* 2019; 7(16): 2134-42. [http://dx.doi.org/10.12998/wjcc.v7.i16.2134] [PMID: 31531309]
- [11] Han W, Aitken D, Zheng S, *et al.* Association between quantitatively measured infrapatellar fat pad high signal-intensity alteration and magnetic resonance imaging-assessed progression of knee osteoarthritis. *Arthritis Care Res* 2019; 71(5): 638-46. [http://dx.doi.org/10.1002/acr.23713] [PMID: 30044537]
- [12] Chang J, Liao Z, Lu M, Meng T, Han W, Ding C. Systemic and local adipose tissue in knee osteoarthritis. *Osteoarthritis Cartilage* 2018; 26(7): 864-71. [http://dx.doi.org/10.1016/j.joca.2018.03.004] [PMID: 29578044]
- [13] Wang K, Ding C, Hannon MJ, *et al.* Signal intensity alteration within infrapatellar fat pad predicts knee replacement within 5 years: data from the Osteoarthritis Initiative. *Osteoarthritis Cartilage* 2018; 26(10): 1345-50. [http://dx.doi.org/10.1016/j.joca.2018.05.015] [PMID: 29842941]
- [14] Lu M, Chen Z, Han W, *et al.* A novel method for assessing signal intensity within infrapatellar fat pad on MR images in patients with knee osteoarthritis. *Osteoarthritis Cartilage* 2016; 24(11): 1883-9. [http://dx.doi.org/10.1016/j.joca.2016.06.008] [PMID: 27327783]
- [15] Macchi V, Stocco E, Stecco C, *et al.* The infrapatellar fat pad and the synovial membrane: an anatomic-functional unit. *J Anat* 2018; 233(2): 146-54. [http://dx.doi.org/10.1111/joa.12820] [PMID: 29761471]
- [16] Jin X, Jones G, Cicuttini F, *et al.* Effect of vitamin D supplementation on tibial cartilage volume and knee pain among patients with symptomatic knee osteoarthritis. *JAMA* 2016; 315(10): 1005-13. [http://dx.doi.org/10.1001/jama.2016.1961] [PMID: 26954409]
- [17] Altman R, Asch E, Bloch D, *et al.* Development of criteria for the classification and reporting of osteoarthritis: Classification of osteoarthritis of the knee. *Arthritis Rheum* 1986; 29(8): 1039-49. [http://dx.doi.org/10.1002/art.1780290816] [PMID: 3741515]
- [18] Hochberg MC, Chang RW, Dwosh I, Lindsey S, Pincus T, Wolfe F. The american college of rheumatology 1991 revised criteria for the classification of global functional status in rheumatoid arthritis. *Arthritis Rheum* 1992; 35(5): 498-502. [http://dx.doi.org/10.1002/art.1780350502] [PMID: 1575785]
- [19] Altman RD, Gold GE. Atlas of individual radiographic features in osteoarthritis, revised. *Osteoarthritis Cartilage* 2007; 15(Suppl A): A1-56. [http://dx.doi.org/10.1016/j.joca.2006.11.009]
- [20] Laffont CM, Vandemeulebroecke M, Concordet D. Multivariate analysis of longitudinal ordinal data with mixed effects models, with application to clinical outcomes in osteoarthritis. *J Am Stat Assoc* 2014; 109(507): 955-66. [http://dx.doi.org/10.1080/01621459.2014.917977]
- [21] Han W, Aitken D, Zhu Z, *et al.* Signal intensity alteration in the infrapatellar fat pad at baseline for the prediction of knee symptoms and structure in older adults: A cohort study. *Ann Rheum Dis* 2016; 75(10): 1783-8. [http://dx.doi.org/10.1136/annrheumdis-2015-208360] [PMID: 26612337]
- [22] Han W, Aitken D, Zhu Z, *et al.* Hypointense signals in the infrapatellar fat pad assessed by magnetic resonance imaging are associated with knee symptoms and structure in older adults: a cohort study. *Arthritis Res Ther* 2016; 18(1): 234. [http://dx.doi.org/10.1186/s13075-016-1130-y] [PMID: 27729069]
- [23] Ballegaard C, Riis RGC, Bliddal H, *et al.* Knee pain and inflammation in the infrapatellar fat pad estimated by conventional and dynamic contrast-enhanced magnetic resonance imaging in obese patients with osteoarthritis: A cross-sectional study. *Osteoarthritis Cartilage* 2014; 22(7): 933-40. [http://dx.doi.org/10.1016/j.joca.2014.04.018] [PMID: 24821663]
- [24] Roemer FW, Kwok CK, Hannon MJ, *et al.* What comes first? multitissue involvement leading to radiographic osteoarthritis: Magnetic resonance imaging-based trajectory analysis over four years in the osteoarthritis initiative. *Arthritis Rheumatol* 2015; 67(8): 2085-96. [http://dx.doi.org/10.1002/art.39176] [PMID: 25940308]
- [25] Yun SJ, Lim Y, Jin W, Park YS, Lee SH, Ryu KN. Validity of radiograph-based infrapatellar fat pad opacity grading for assessing knee synovitis: Correlation with contrast-enhanced MRI. *AJR Am J Roentgenol* 2017; 209(6): 1321-30. [http://dx.doi.org/10.2214/AJR.16.17718] [PMID: 29045182]
- [26] Heilmeyer U, Mamoto K, Amano K, *et al.* Infrapatellar fat pad abnormalities are associated with a higher inflammatory synovial fluid cytokine profile in young adults following ACL tear. *Osteoarthritis Cartilage* 2020; 28(1): 82-91. [http://dx.doi.org/10.1016/j.joca.2019.09.001] [PMID: 31526878]
- [27] Eymard F, Pigenet A, Citadelle D, *et al.* Induction of an inflammatory and prodegradative phenotype in autologous fibroblast-like synoviocytes by the infrapatellar fat pad from patients with knee osteoarthritis. *Arthritis Rheumatol* 2014; 66(8): 2165-74. [http://dx.doi.org/10.1002/art.38657] [PMID: 24719336]